

## Medium and fine protection for two-core systems 24 V



Surge protection for use in measurement and control technology

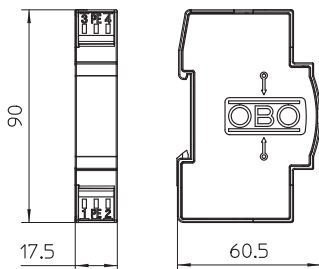


- Medium and fine protection
- Standard design for double core systems
- Two-stage protection circuit
- With installation-friendly, screwless connection terminals
- In space-saving 17.5 mm grid
- With ohmic decoupling in the longitudinal branch

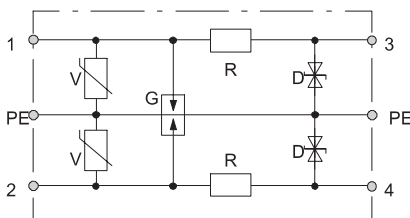
Application: Universal use on any 35 mm DIN profile rail in every commercially available distributor housing.

Type	Highest continuous voltage AC V	Highest continuous voltage DC V	Number of poles	Connection system	Pack. pcs	Weight kg/100 pcs.	Item No.
FRD 2-24	19	28	2	Terminal	1	5,100	5098727

### Dimensions



### Connection options



### FRD 2-24

Maximum continuous voltage AC V	U <sub>c</sub>	19
Maximum continuous voltage DC V	U <sub>c</sub>	28
Category		Type 2+3 / C2+C1
Lightning protection zone LPZ		1→3
Number of poles		2
Rated current A	I <sub>n</sub>	0,2
Series resistance per wire		15 Ω ± 10 %
Impulse durability wire-wire		C2: 5 kV / 2,5 kA (8/20μs)
Impulse durability wire-earth		C2: 5 kV / 2,5 kA (8/20μs)
Total discharge current (8/20) kA		5
Total discharge current (10/350) kA		–
Protection level wire-wire V		<120
Protection level wire-earth V		<60
Temperature range °C	θ	-40-80
Installation type		Hat rail 35 mm
Connection system		Terminal
Division unit TE (17.5 mm)		1
Protection rating		IP20
Connection cross-section, flexible mm <sup>2</sup>		0,14-2,5
Connection cross-section, multi-wire mm <sup>2</sup>		0,14-2,5
Connection cross-section rigid mm <sup>2</sup>		0,14-2,5
Earthing via:		Terminal
Testing standard		IEC 61643-21