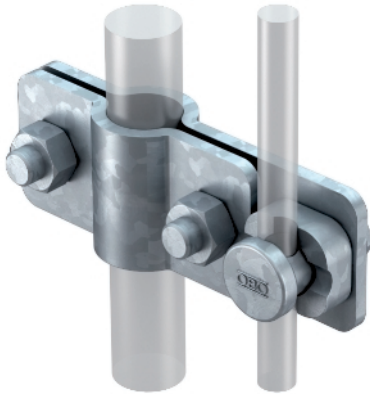


Connection clamp for earth rod to round conductors Rd 8–10



- ST, BP, OMEX and LightEarth system
- On round conductor Rd 8-10
- Incl. connector, type 5001 DIN

Type	For earth rods Ø mm	Dimension A mm	Dimension B mm	Pack. pcs	Weight kg/100 pcs.	Item No.
2710 20	20	84	114	5	39,900	5001218
2710 25	25	89	119	5	42,300	5001226

St Steel

FT Hot-dip galvanised

Dimensions

