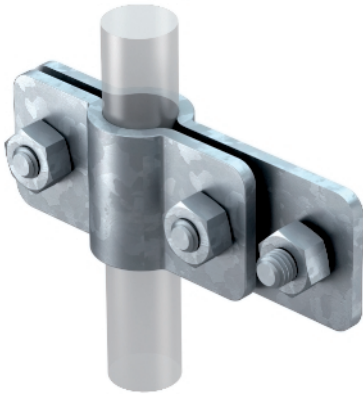


Connection clamp for earth rod on flat conductor



- ST, BP, OMEX and LightEarth systems
- On flat conductors
- Including hex-head screw for attaching flat conductors

Type	For earth rods Ø mm	Dimension A mm	Dimension B mm	Pack. pcs	Weight kg/100 pcs.	Item No.
2730 25 FT	25	89	119	5	38,800	5001412
2730 20 FT	20	84	114	5	35,900	5001404

St Steel

FT Hot-dip galvanised

Dimensions

