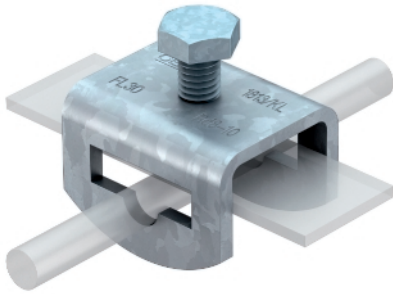


Variable earthing terminal



- Suitable for connection for Rd 10 x FL 30, FL 30 x FL 30
- Quick mounting using a hexagonal bolt M10 x 20 (F)

Type	Fit mm	Pack. pcs	Weight kg/100 pcs.	Item No.
1813 KL	FL30 x Rd 8-10	50	18,000	5014425

- St** Steel
- FT** Hot-dip galvanised

Dimensions

