

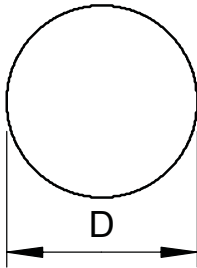
Round conductor, aluminium



- According to DIN EN 62561-2 (VDE 0185-561-2)
- Corresponds to the requirements of VDE 0185-305 (IEC 62305)
- RD 8 ALU: Semi-hard (E-ALMgSi0.5 corresponds to DIN 48801)
- RD 8 ALU-T: Can be subjected to torsion (E-ALMgSi0.5 corresponds to DIN 48801)
- RD 10 ALU: Pure aluminium (E-Al corresponds to DIN 48801)
- AL and ALMgSi may not be routed directly on, in or under plaster, mortar or concrete, nor routed in the earth

Type	Nominal size Ø mm	Cross-section mm ²	Normal ring ca. m	Normal ring ca. kg	Weight kg/100 m	Item No.
RD 8-ALU	8	50	150	20	13,500	5021286
RD 8-ALU-T	8	50	150	20	13,500	5021294
RD 8-ALU-T 75	8	50	75	10	13,500	5021296
RD 10-ALU	10	78	95	20	21,000	5021308

Dimensions



Alu Aluminium