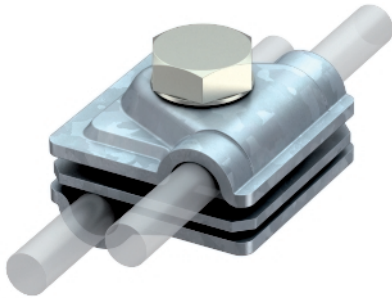


## Variable earthing connector Rd 6-8 / 8-10 mm



- For T, intersection and parallel connections with adapter plates
- Quick mounting using an M10 x 30 bolt, made from rustproof stainless steel
- With sprung washer to DIN 137
- Corresponds to the requirements of VDE 0185-305 (IEC 62305)

Type	Fit mm	Dimen- sion A mm	Withstand lightning current kA	Pack. pcs	Weight kg/100 pcs.	Item No.
249 6-10 ST	RD 6-8 / 8-10	40	H/100	20	13,100	5311410

- St** Steel
- FT** Hot-dip galvanised

### Dimensions

