

Fibre Distribution Hub

Prysmian Part Number: XJTSC00576



The FDH cabinet has been developed for outdoor applications and in particular for use in Fibre To The Home (FTTH) passive optical networks (PONs). It is equipped with front mounted 19" uprights. It has a large accessible front and also has access on both sides. With 20U of workable space offered internally, the FDH can accommodate a wide range of connectivity products such as splicing shelves, patching shelves, splice and patch shelves, patchcord storage shelves and splitter shelves. The cabinet can be supplied empty or pre-configured by Prysmian to customer specific requirements.

Features and Benefits

- The FDH is suitable to accept the Prysmian SRS3000 series sub-racks (see additional items). In addition the cabinet can accommodate a splitter shelf which can accommodate a number a pre-connectorised splitter modules (see additional items).
- The internal layout of the cabinet has been designed for efficient use of space. Up to 20U is available for mounting of additional shelves. Access is provided from the front and both sides.
- Cable management within the cabinet ensures the minimum bend radius for optical fibres is not exceeded.
- Additional subscriber capacity within the hubs is easily achieved through the installation of additional modular splitters when required.
- The cabinet is designed for operation in a variety of climatic conditions.
- The cabinet can be supplied with pre-terminated input and output tail cables to the internal patch panel for fast initial field installation. Contact Prysmian for further information.
- The cabinet is supplied with a plinth for ease of cable installation.
- The cabinet is manufactured from a robust heavy duty but lightweight casing material and is sealed to IP55.
- The cabinet is painted grey RAL7037 as standard. Other colours are available on request.

Kit Contents

The fibre distribution hub is supplied empty with standard 19" front mounting rails. It can be configured to the users requirement using a variety of standard 19" products. See additional items.

The FDH can also be supplied pre-configured by Prysmian. Contact Prysmian for further information.

Additional Items

- Splitter Shelf
- Connectorised Splitter Modules
- SRS3000 Splice Shelves
- SRS3000 Splice and Patch Shelves
- SRS3000 Patch Only Shelves
- SRS3000 Storage Shelves
- SRS3000 Sub-Racks
- Horizontal Routing and Storage Shelf
- Cable Anchor Brackets
- ARS Cable Anchor
- BEM Cable Anchor
- Splice Protectors

Technical Data

- Dimensions: 1420 (h) x 790 (w) x 310 (d) (Plinth included at 395mm height)
- Capacity: 20U
- Total Fibre Capacity:
 - Splice and Patch: 960 (SC and LC), 480 (E2000, FC and ST)
 - Patching Only: 960 (SC and LC), 480 (E2000, FC and ST)
 - Splicing Only: 960
- Material: Mild Steel
- Finish: Powder Coat Painted
- Colour: RAL-7037 Grey (other colours available on request)
- Sealing: IP55
- Cabinet Locking Mechanism 3 point lock as standard or others available on request

Logistics

- Packing Dimensions (mm): 1800 (h) x 1100 (w) x 330 (d)
- Approx Packed Weight (kg): 100

Additional Items

Modular Splitter Shelf

The Modular Splitter Shelf is a 3U high shelf that is used to mount pre-connectorised Splitter Modules into the FDH Cabinet. Splitter Modules from 1x4 to 1x64 can be installed into the cabinet. Splitter input fibres are connected to incoming network feeder cables by use of a splice and patch shelf, or a splice only shelf (cut connector from splitter input) such as the SRS3000 Shelves (see page 4). The splitter outputs are pre-connectorised and can be routed directly to splice and patch or patch only shelves within the cabinet for connection to network cables.



Splitter Modules are installed into the splitter using plastic pop rivets. Up to 14 Splitter modules can be accommodated into the 3U splitter shelf.

Prysmian Part Number: XEXSC01548

Splitter Modules

Splitter Modules are used to populate the splitter shelf. Splitter Modules are pre-connectorised splitters housed in a protective unit. The splitter outputs are connectorised for direct connection to the network cable patch panels. The modules are available with split ratios from 1x4 to 1x64 and can be supplied with the output tails connectorised with FC, SC or LC connector types. The input fibre tail is a ruggedised connectorised fibre that can be routed to a splice and patch shelf for connecting to the network feeder cable. Other combinations and connector types are available on request.



Prysmian Part Numbers:-

SPLITTER RATIO	CONNECTOR TYPE					
	FC/UPC	FC/APC	SC/UPC	SC/APC	LC/UPC	LC/APC
1x4	XSPSC00080	XSPSC00081	XSPSC00082	XSPSC00083	XSPSC00084	XSPSC00085
1x8	XSPSC00086	XSPSC00087	XSPSC00088	XSPSC00089	XSPSC00090	XSPSC00091
1x16	XSPSC00092	XSPSC00093	XSPSC00094	XSPSC00095	XSPSC00096	XSPSC00097
1x32	XSPSC00098	XSPSC00099	XSPSC00100	XSPSC00101	XSPSC00102	XSPSC00103
1x64	XSPSC00104	XSPSC00105	XSPSC00106	XSPSC00107	XSPSC00108	XSPSC00109

SRS3000 Splice Only Shelf

The SRS3000 Splice Only Shelf is used to splice cables directly to connectorised pigtails, or for splicing splitter input fibres to the network cables. The shelf is 1U in height and can accommodate up to 48 splices. The shelf hinges outwards to provide access and the unit is compatible with blown fibre tuning.



Prysmian Part Numbers: See data sheet RM0018

Additional Items

SRS3000 Patch Only Shelf

The SRS3000 Patch Only Shelf is a 1U shelf allowing the connection of up to 48 fibre patches. The shelf can accommodate a variety of different connector types including FC, SC, LC, E2000 and ST. The shelf hinges outwards to provide access for installation.

Prysmian Part Numbers: See data sheet RM0019



SRS3000 Splice and Patch Shelf

The SRS3000 Splice and Patch Shelf is a 1U shelf allowing the connection of up to 48 fibres onto adapter panels. The shelf can accommodate a variety of connector types including FC, SC, LC, E2000 and ST. The shelf hinges outwards to provide access for installation.

Prysmian Part Numbers: See data sheet RM0014



SRS3000 Patchcord Storage Shelf

The SRS3000 Patchcord Storage Shelf is a 1U shelf allowing the storage of patchcords or patchcord over-length. The shelf can accommodate a variety of lengths depending on the number of patchcords to be installed. The shelf hinges outwards to provide access for installation.

Prysmian Part Numbers: See data sheet RM0020



SRS3000 Sub-Racks

As well as being supplied as 1U shelves, the SRS3000 Splice, Patch, Splice + Patch and Patchcord Storage modules can be supplied pre-installed into a sub-racks. Sub-racks are available in 2U and 3U heights. For further information refer to datasheet RM0015

Prysmian Part Numbers: See data sheet RM0015



SRS3000 Connectorised Splitter Shelf

The SRS3000 Splice Only Shelf is used to splice internal cables directly to connectorised pigtails, or for cable to cable jointing. The shelf is 1U in height and can accommodate up to 48 splices. The shelf hinges outwards to provide access and the unit is compatible with blown fibre tuning.

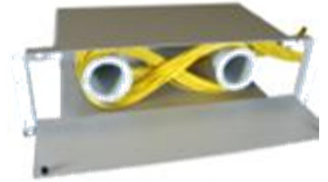
Prysmian Part Numbers: See data sheet RM0022



Additional Items

Horizontal Routing and Storage Shelf

The Horizontal Routing and Storage Shelf is a 3U shelf used to transport patchcords from one side of the RS3000 rack to the opposite side. The shelf can also be used as a patch cord storage shelf for the storage of patch cord over-lengths. Manufactured from the steel, the shelf contains two routing mandrels for the coiling of the patch cord over-lengths.



Prysmian Part No.: XEXSC01560

Additional Cable Anchor Brackets

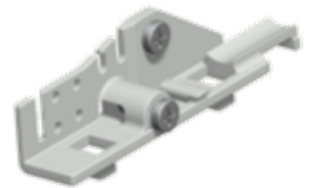
Four cable anchor brackets are supplied with the rack for securing the cables in the left hand side, Additional brackets can be ordered if required. The brackets are supplied as a set of two including fixing screws.



Prysmian Part No.: XKTSC00285 (pack of 2)

SRS - ARS Cable Anchor

The ARS Cable Anchor kit is used to install an additional cable into an SRS3000 shelf, or into the rack for routing to a number of shelves. The ARS is suitable for cables between 12 and 48 fibres. Bend limiting routing tubes to protect the fibres being routed to the shelf are also supplied in the kit. The ARS also allows for the anchoring / termination of both the cable strength member and any Aramid within the cable construction.



Prysmian Part Nos.: - **XSRSC00360 – ARS + 1.5m of bend limiting tube**
XEXSC00962 – ARS + 10m of bend limiting tube
XEXSC00963 – ARS + 10m of RFH tube

BEM Cable Clamp

The BEM Cable Clamp is used to anchor the cable within the rack or to an SRS3000 Mounting Chassis and route the fibres onto the Modules. The BEM is suitable for cables between 36 and 192 fibres. 20 metres of routing tube is supplied with the BEM.



Prysmian Part Nos.: **XEXSC00960 – BEM + 20m of bend limiting tube**
XEXSC00961 – BEM + 20m of RFH tube

Blown Fibre Manifold

The Blown Fibre Manifold is used to take up to 6 blown fibre tubes of 5mm in diameter onto one SRS3000 module. The manifold fits onto the back of the SRS3000 chassis and is supplied with a protective cover.



Prysmian Part No. – XKTSC00257

Please contact your local sales office listed on www.prysmiangroup.com

© Prysmian Group 2013, All Rights Reserved.
 The information contained within this document must not be copied, reprinted or reproduced in any form, either wholly or in part, without the written consent of Prysmian Group. The information is believed correct at the time of issue. Prysmian Group reserves the right to amend this specification without notice. This specification is not contractually valid unless specifically authorised by Prysmian Group.