

# UC C300 PP TR U BK 24 1U



24port Cat5e UTP 90° Punchdown Panel  
Rear Management in Black

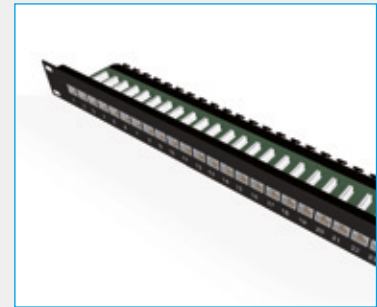
## 1.4. Patchpanels

### Specification

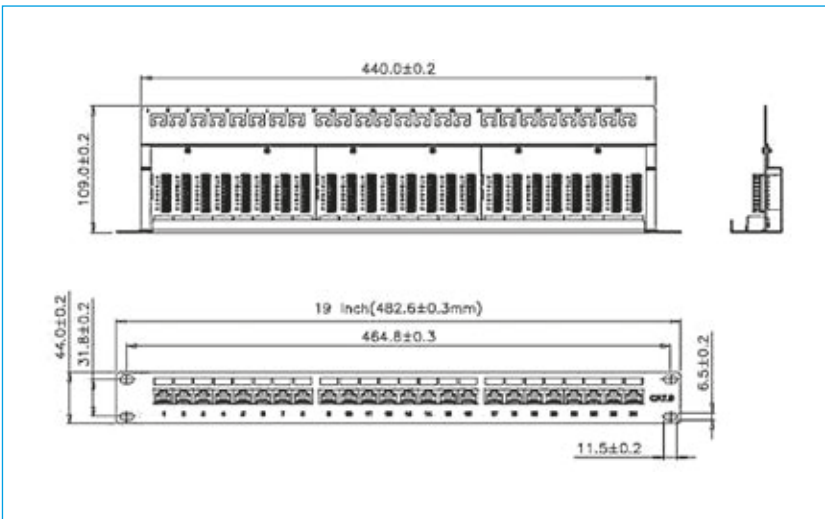
| Item   | Description   |
|--|---|
| <b>Panel</b>                                 | SPCC, 1.2 mm thickness                                |
| <b>RJ45 jack contact material and finish</b> | Phosphor Bronze                                       |
| <b>Contact area</b>                          | Min 3 mm 50 micro-inch Gold plated over Nickel colour |
| <b>IDC terminal and finish</b>               | Phosphor Bronze with min, 50 micro-inch Tin plated    |
| <b>Wire size compatibility</b>               | 23-26 AWG solid wire                                  |
| <b>Dimensions</b>                            | 482 x 44 x 109 mm                                     |

### Performance

| Item                         | Description                                  |
|------------------------------|--|
| <b>IDC cap colour code</b>   | supports both wiring schemes TIA 568A & 568B |
| <b>Insertion force</b>       | 20N max                                      |
| <b>Retention strength</b>    | 7.7kg between jack and plug                  |
| <b>Operating temperature</b> | -10°C to 60°C                                |
| <b>Durability</b>            | Jack 750 cycles                              |



- Cat5e compliant performance
- 90° termination blocks for easy termination
- Compatible with 110 & Krone Punch Tools
- Built in cable management
- Available in Black and Grey
- Lasermark labels available on request



### Technical data

| Product code      | Product name             | Description   | Weight | Items per packaging unit |
|-------------------|--------------------------|---|--------|--------------------------|
|                   |                          |   | g      |                          |
| <b>YPPBP00106</b> | UC C300 PP TR U BK 24 1U | 1U 24port Cat5e UTP 90° Punchdown Panel with Rear Management in Black | 720    | 1 or 20                  |

### Related Products

|                   |                          |   |     |         |
|-------------------|--------------------------|---|-----|---------|
| <b>YPPBP00106</b> | UC C300 PP TR U BK 24 1U | 1U 24port Cat5e UTP 90° Punchdown Panel with Rear Management in Black | 720 | 1 or 20 |
|-------------------|--------------------------|---|-----|---------|